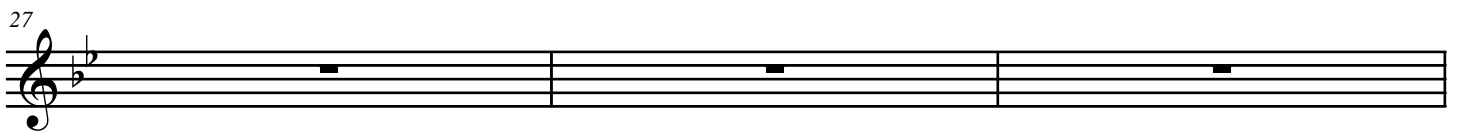
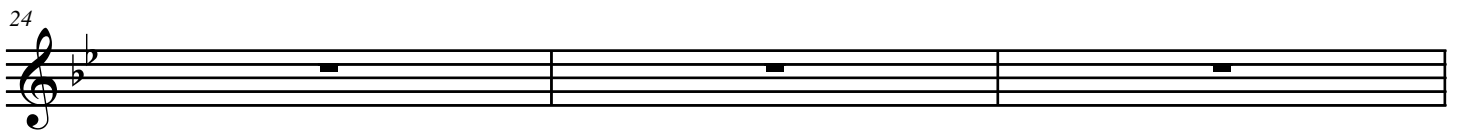
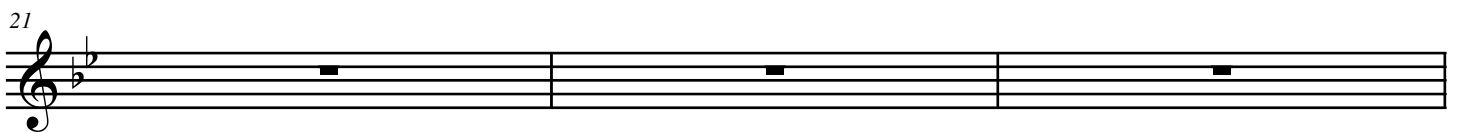
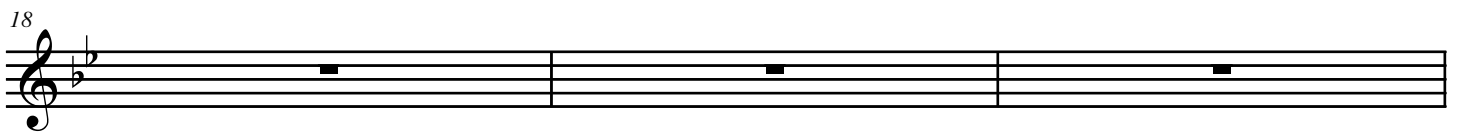


Exercise #1

[Composer]



30

A musical staff in treble clef with a key signature of one flat (B-flat). The staff contains two whole rests, one in the first measure and one in the second measure. The staff is divided into two measures by a vertical bar line. The first measure contains a whole rest on the second line, and the second measure contains a whole rest on the second line. The staff ends with a double bar line.